

STRONGWALL®

PEDESTRIAN BARRIER & FENCING

A robust plastic, non-conductive safety barrier with typical applications at events and on construction sites to ensure maximum safety to both members of the public and site workers.

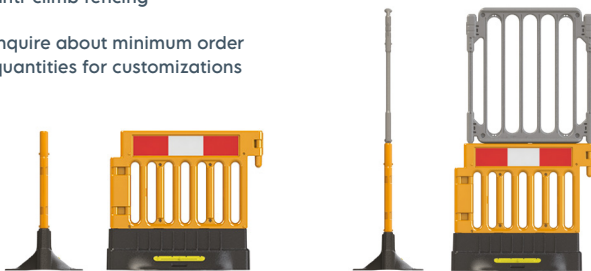
PRODUCT RANGE



STRONGWALL

Usage Benefits

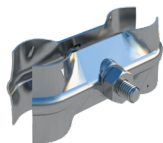
- ▶ Create a highly stable barrier or fenced perimeter to combat high volumes of traffic even in hot weather conditions, with no additional ballast
- ▶ A heavy duty, durable component used for easy and effective installation
- ▶ Breaks down into three components for compact storage and transport
- ▶ Keep worksites secure with 6ft tall anti-climb fencing
- ▶ Inquire about minimum order quantities for customizations
- ▶ Be confident that your fence line will stay in tact with connections which are moulded to the barrier
- ▶ Non-conductive plastic to keep your worksite and the public safe around live sites
- ▶ A closed loop recycling product: made using recycled PVC
- ▶ Able to be returned to Oxford Plastics to be fully recycled
- ▶ ADA compliant base available



ADA Base: 0196



Metal: 0645



Plastic: 0645



	STRONGWALL	STRONGFENCE
Product No.	O748	O687
Product code	5306 (Base) & 3043 (Top)	4697
Width	22"	22"
Length	40"	40"
Height	39"	81"
Weight	49lb	56lb
Quantity / Pallet	18	18
Color	Black & Orange	Black, Orange & Silver